

KINGVIEWMINERALS.CA

# INVESTOR PRESENTATION

SPRING 2023



**Kingsview Minerals Ltd**

CSE KVM  
FSE 0L4

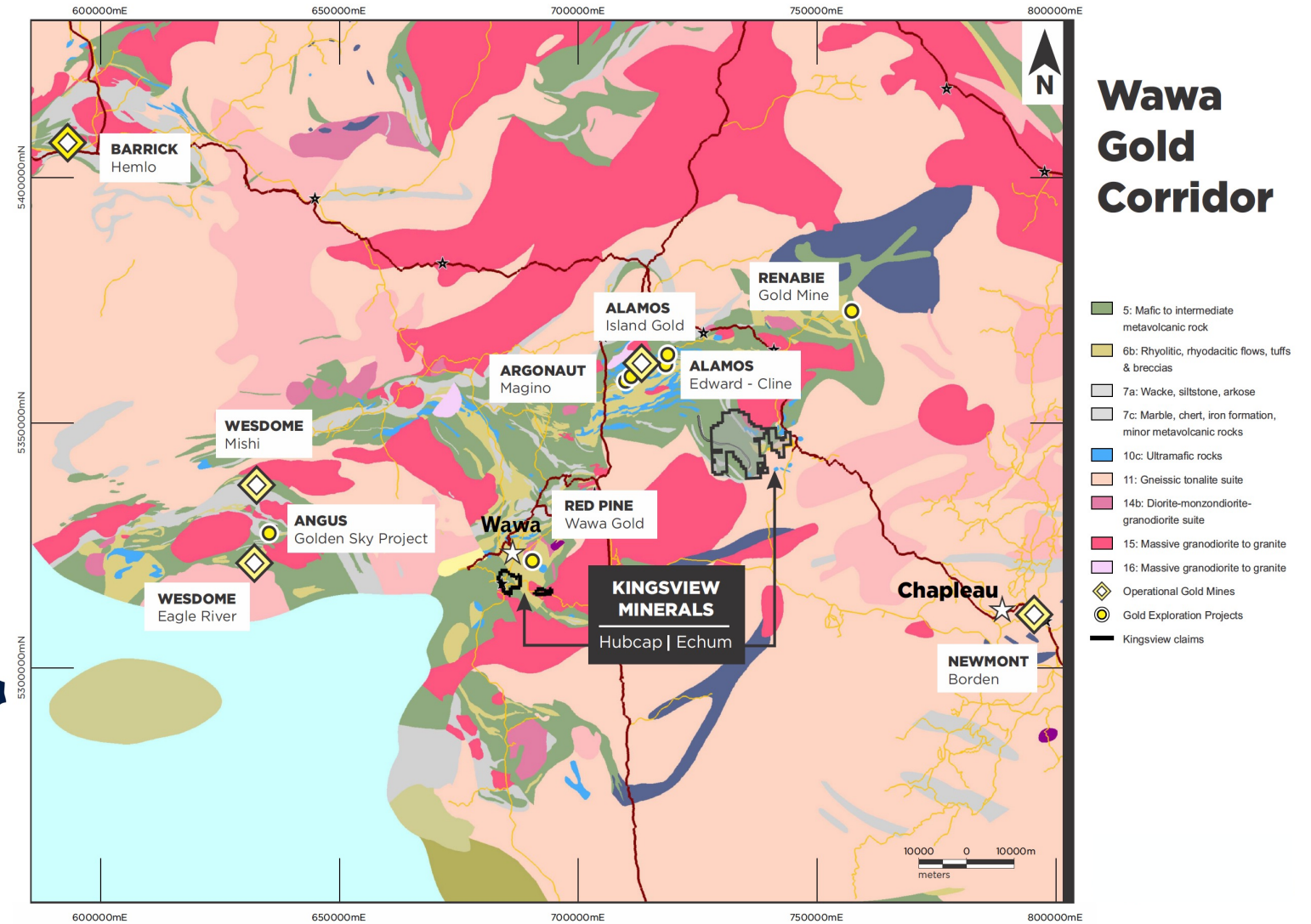
# Kingsview Properties within the Prolific Wawa Gold Corridor

- **Large and well positioned property package located in the fastest growing gold district in Ontario (Michipicoten Greenstone Belt)**
  - **Echum Project** - Property package including greenstones and banded iron formations adjacent to Alamos' Island Gold Mine and Argonaut's Magino Gold Deposit
    - Showings include a shear zone with gold/silver-bearing quartz vein 3-40 cm wide and approximately 300 m long, open to the west
    - Current and historic\* grab samples returned Gold, Silver, Copper, and Zinc
    - **517-metre deep VTEM conductor identified – basis for initial 2023 drilling program**
  - **The Hubcap Project** – located 1,500 metres south of Red Pine Exploration's Jubilee Discovery Hole
    - The "Barton Showing" grab sample assays included 3.44 g/t, 6.31 g/t, and 1.16 g/t Au
    - Past workings on the property with small production; historic\* underground samples returned up to 80 g/t Au
    - The "Ross Showing" returned historic\* grab sample values of up to 383 g/t Au and 219 g/t Ag, and veins of 1-3 metres in width were identified
    - **Recent surface sample results include 14.50 g/t Au, 57.10 g/t Ag and 2.41% Cu; 2.95 g/t Au, 34.90 g/t Ag and 1.83% Cu; and 2.14 g/t Au, 62.80 g/t Ag and 3.16% Cu**
- **Technical team specializes in Ontario, with a long track record of significant successes**

\* All technical information in this document is historical in nature and while the Company and the QP consider the information to be generally correct and relevant to the project, it should not be relied upon.



# Regional Overview



# The Wawa, Hemlo and Timmins Gold Corridors - Advanced Infrastructure and Rich Mining History \*

## Active area with producing assets including:

- Wesdome – Mishi and Eagle River (Combined 3M oz)
- Barrick – Hemlo (30M oz)
- Harte Gold – Sugar Zone (1.7M oz)
- Argonaut – Magino (2.1M oz)
- Alamos – Island Gold (2.5M oz)
- Goldcorp – Borden (1.9M oz)
- Timmins Area (>100M oz)

## Exploration assets in proximity to operating assets include:

- Red Pine Exploration – Minto South and Surluga (Combined 725,000 Oz)
- Manitou Gold
- Angus Gold

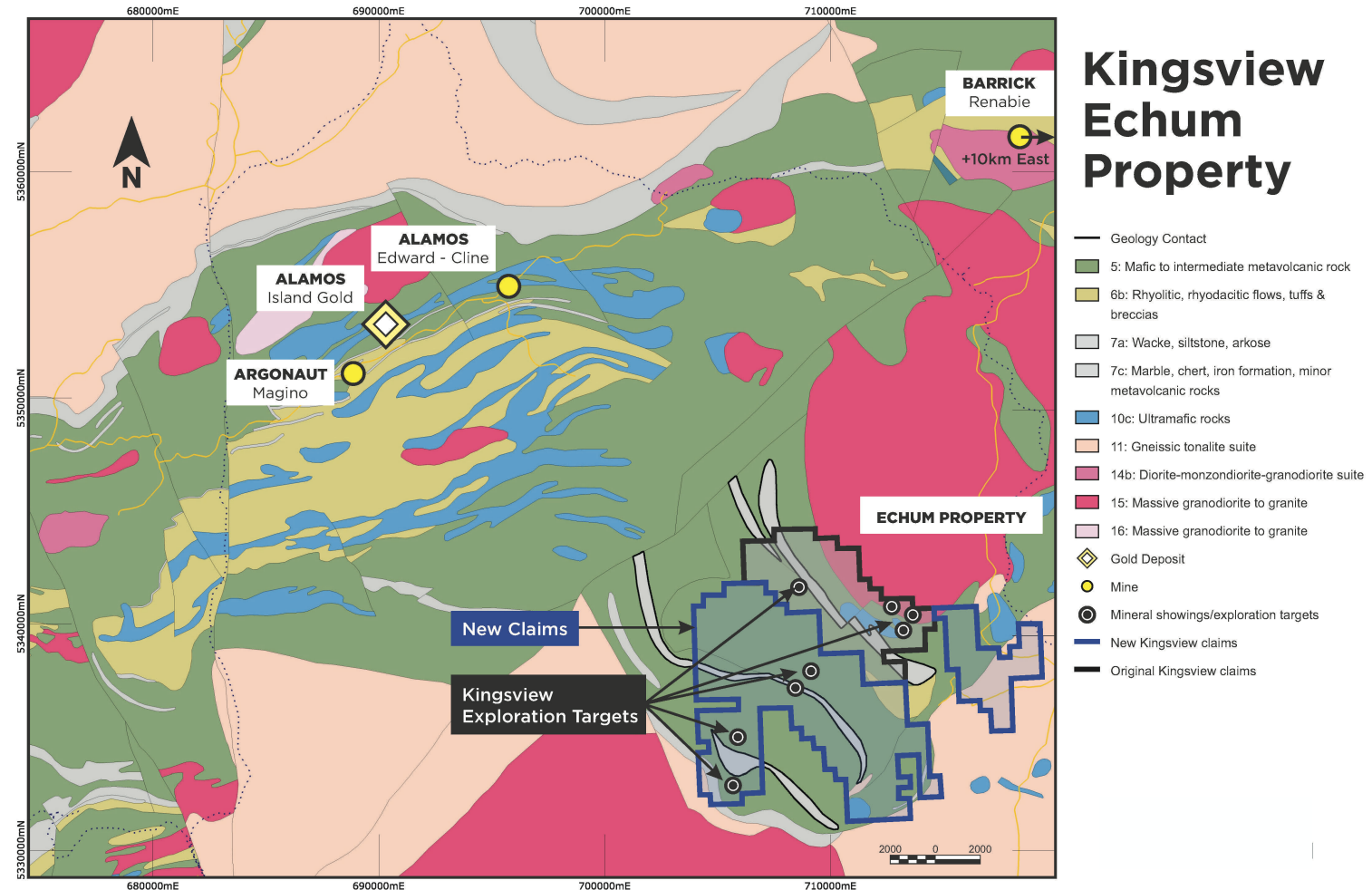




# Echum Project – Gold, Silver, and Critical Metals

## Located on the Southeastern part of the Michipicoten Greenstone Belt

- Property totals 7,691 hectares and includes greenstones and banded iron formations
- Adjacent to Alamos' Island Gold Mine and Argonaut's Magino Gold Deposit
- Numerous targets previously identified, including a 517-metre deep VTEM conductor
- Showings include a shear zone with a gold/silver-bearing quartz vein 30-40 cm wide and at least 300 m long, open to west
- Historic\* grab samples returned up to:
  - 256 g/t Au and 442 g/t Ag
  - 1.71% Pb
  - 53.13 g/t Au
- 2021 Surface sampling results included Gold, Silver, Copper, and Zinc grades



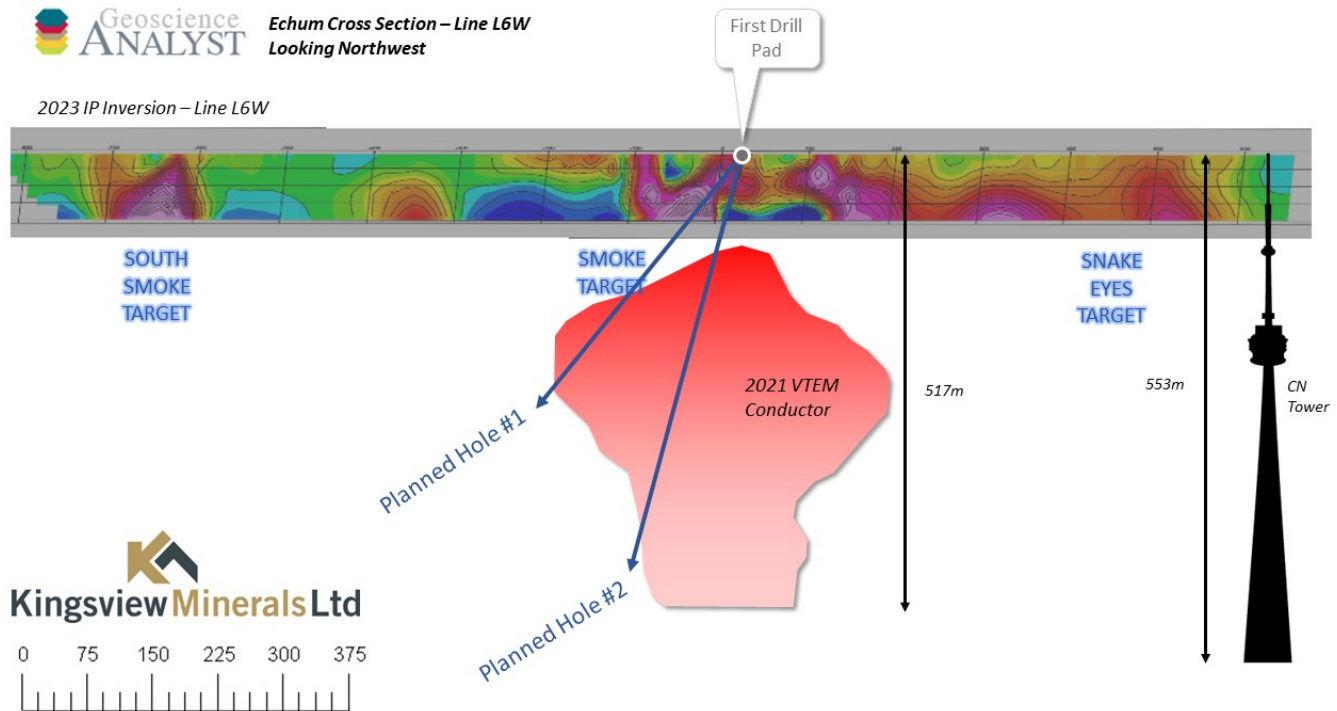
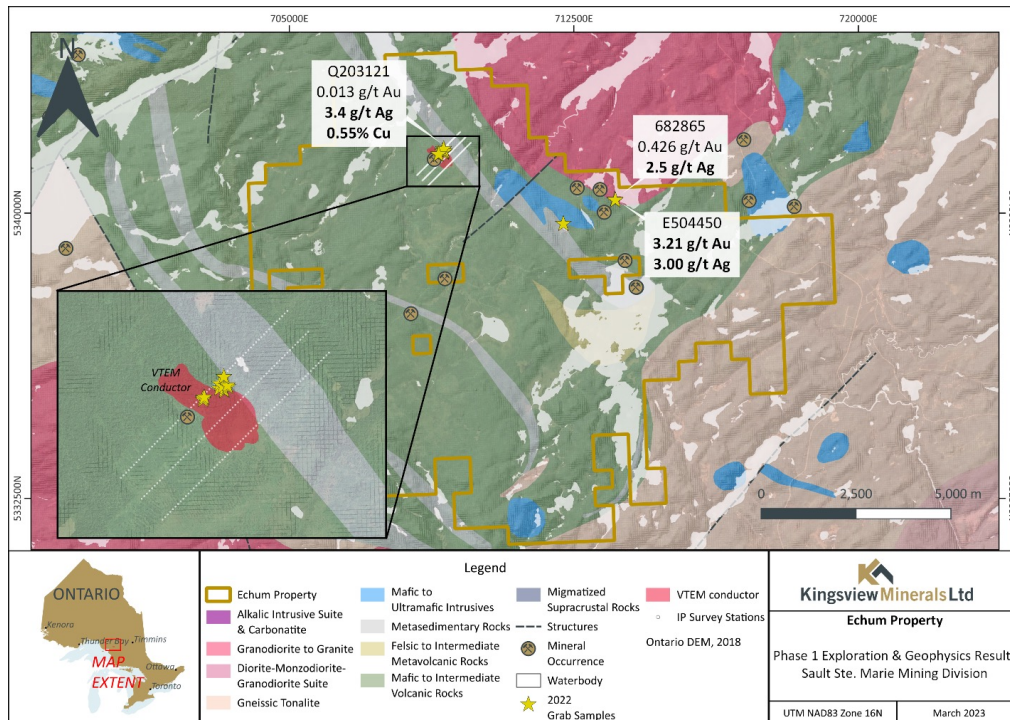
\* All technical information in this document is historical in nature and while the Company and the QP consider the information to be generally correct and relevant to the project, it should not be relied upon



# Echum Project – 2022/ 2023 Exploration Program

## 2021 Surface Sampling Program

- 21 surface samples collected immediately south of Manitou Gold's (acquired by Alamos) Goudreau Property
- 2022 Surface sampling results included:
  - 3.21 g/t Au and 3.00 g/t Ag
  - 3.40 g/t Ag and 0.55% Copper



## 2023 Airborne VTEM Survey

- Multiple priority targets uncovered from the survey
- 517-metre deep VTEM conductor identified – 3 drill holes planned as a priority target
- Historic surface sampling along the three IP lines along the iron formation produced Copper values ranging from 258 ppm up to 2,510 ppm and Zinc values ranging from 63 ppm up to 1,537 ppm.

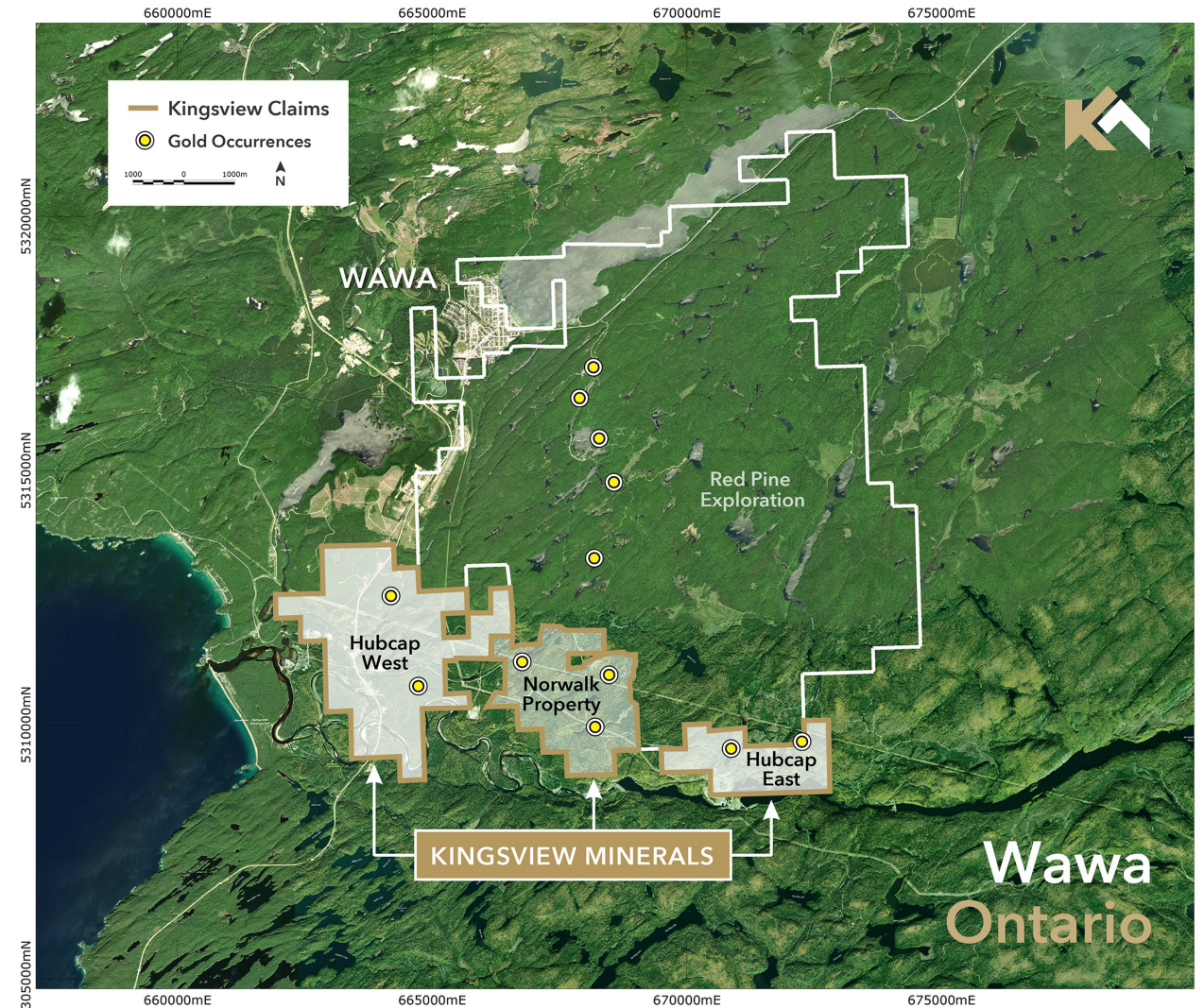




# Hubcap Project – Precious Metals on Trend with Red Pine’s Jubilee

## Located South of Red Pine

- Totalling 4,623 hectares of greenstones
- 9 parallel gold-bearing quartz veins have been historically worked
- All gold-bearing quartz veins are open at depth
- Historic drill hole returned 11 g/t Au\*
- Historic underground samples returned up to 80 g/t Au\*
- Potential for platinum group metals
- “May Shaft” area reported historic grab samples of up to 202 g/t Au\*
- “Ross Showing” area:
  - Reported historic grab sample values of up to 383 g/t Au and 219 g/t Ag\*
  - Vein widths of 1-3 metres
  - Could be associated with a porphyry system
- Recent surface sample results include 14.50 g/t Au, 57.10 g/t Ag and 2.41% Cu; 2.95 g/t Au, 34.90 g/t Ag and 1.83% Cu; and 2.14 g/t Au, 62.80 g/t Ag and 3.16% Cu



\* All technical information in this document is historical in nature and while the Company and the QP consider the information to be generally correct and relevant to the project, it should not be relied upon



## Work Program

### 2022/23 Exploration Program

- Airborne geophysical survey (VTEM) (COMPLETED)
- Desktop review of all historical work (COMPLETED)
- Field prospecting, mapping, and sampling of target areas – focused on known areas of gold mineralization and priority structure corridors (COMPLETED)
- Ground IP & high-resolution mag surveys
- 1,000-metre drilling program planned





# Kingsview Technical Team



- Technical team are **shareholders of Kingsview**
- The team includes full suite of experts that have a history of working in the Wawa Gold Corridor, including:
  - Prospectors
  - Field Geologists and a QP
  - Geophysics / Geoscientists
  - Drilling team that comes with more than one drill
- This is a major advantage as there is currently a shortage of experienced personnel & equipment





## Management and Board of Directors

- James Macintosh - President and CEO, Director
- Julio DiGirolamo - Chief Financial Officer
- Jamal Amin - VP Exploration, Director
- Bob Leshchyshen - Independent Director (Audit Committee)
- Peter Bures - Independent Director

## Technical Advisors

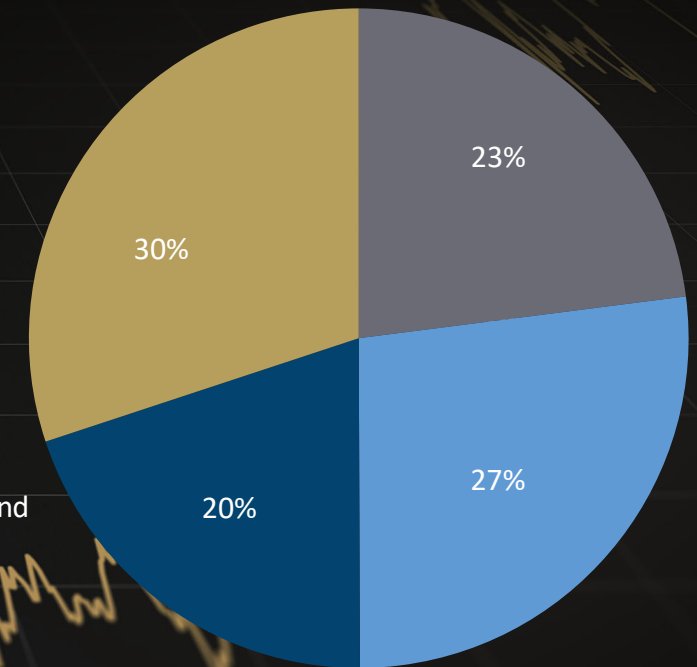
- Bruce Durham - P.Geo, Qualified Person (QP)
- Morgan Verge – P.Geo, Senior Geologist
- Don McKinnon Jr.
- Jeremy Niemi



# Corporate Structure

As at December 31, 2022	
Shares Issued and Outstanding	39,332,112
Warrants	4,635,000
Options	2,000,000
Fully Diluted	45,967,112

- Strategic Seed Investors
- Distribution
- Property Vendors
- Pre-Listing Financing Round





## Kingsview's Wawa Property Portfolio

- **Large and well positioned property package located in the fastest growing Ontario district (Michipicoten Greenstone Belt)**
  - **Echum Project** - Gold, Silver, and Critical Minerals Property package, including greenstones and banded iron formations, adjacent to Alamos' Island Gold Mine and Argonaut's Magino Gold Deposit
  - **The Hubcap Project** – located 1,500 metres south of Red Pine Exploration's Jubilee Discovery Hole
- **Technical team specializes in Ontario and has a long track record of significant successes**



KINGSVIEWMINERALS.CA

For More Information

[investors@kingsviewminerals.ca](mailto:investors@kingsviewminerals.ca)



**Kingsview Minerals Ltd**

**CSE KVM**  
**FSE 0L4**